

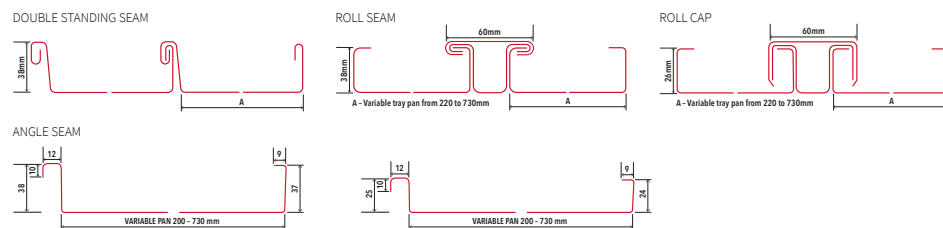
## TRS STANDING SEAM™

### PURPOSE

The TRS Standing Seam cladding system (the Standing Seam system) is supplied for use as a roof cladding system, an external wall cladding system and an internal wall lining.

### EXPLANATION

The TRS Standing Seam system comprises long-run metal wide tray sections that are joined together using seam and cap method. TRS offers different seam and cap options depending on functional and aesthetic requirements. Four TRS Standing Seam profiles are available:



Profiles are supplied with a seam height of 38 mm. Profiles are available in the following materials:

	Angle Seam	Double Standing Seam	Roll Seam	Roll Cap
Vitor+, Vitor+ ZX, Lux (0.4 mm, 0.55 mm)			X	X
Copper	X	X	X	X
Aluminium (0.80 g)	X	X	X	X
Zinc	X	X	X	X
Stainless steel	X	X	X	X
Titanium			X	X

Where used as a roof cladding, maximum tray length depends on material, roof pitch and location conditions (wind suction and snow loading). The system is mechanically fixed to the substrate comprising plywood or timber sarking and building wrap.

Profiles are fixed with concealed metal clips. Clips are screwed or nailed into the substrate. Angle Seam and Double Standing Seam profiles may be fixed with screws or nails. Roll Cap and Roll Seam must be fixed with tex head roofing screws.

### SCOPE AND LIMITATIONS OF USE

Scope	Limitations
<b>Location</b> In all wind zones as defined in NZS 3604:2011 or up to a calculated wind design pressure of ULS 4.2 kPa for use as a roof cladding and 2.1 kPa for use as a wall cladding. All exposure zones as defined in NZS 3604:2011.	<ul style="list-style-type: none"> <li>➤ For use as a roof cladding, sheet length, pan width and fixings to meet specific wind zone or pressure. Panels are subject to wind suction only.</li> <li>➤ For use as a wall cladding, fixing to be in accordance with TRS span tables.</li> <li>➤ Where exposure zone D applies, Vitor+ and Lux must not be used.</li> <li>➤ Where 'microclimatic conditions' apply (section 4.2.4, NZS 3604:2011), contact The Roofing Store for technical advice.</li> </ul>
On buildings located any proximity to a relevant boundary.	<ul style="list-style-type: none"> <li>➤ The design and construction of the other external envelope elements must comply with the relevant fire provisions of the NZ Building Code.</li> </ul>
<b>Building</b> In conjunction with a primary structure (timber or steel structural framing, or over structural panels) that complies with the NZ Building Code or where the designer and/or installer has established that the existing structure is suitable for the intended building work.	<ul style="list-style-type: none"> <li>➤ Where installed over steel framing and where part of an insulated building, a thermal break is required.</li> <li>➤ For use as a roof cladding, a substrate of plywood or timber sarking with a building wrap must be installed that complies with the NZ Building Code. The substrate must be fixed with screws. Oil-based wood treatments must be avoided.</li> </ul>
As a roof cladding.	<ul style="list-style-type: none"> <li>➤ Only 38 mm Standing Seam may be used as a roof cladding.</li> <li>➤ Minimum roof pitch of 3° subject to tray lengths and applied environmental loads.</li> <li>➤ Flashings, flexible building underlays and fixings must be in accordance with E2/AS1 and/or the NZMRM Code of Practice (v3.0).</li> <li>➤ Contact with other materials must be in accordance with E2/AS1 and NZMRM Code of Practice (v3.0).</li> </ul>



For further assistance please contact:

- ☎ 0800 277 271
- ✉ info@theroofingstore.co.nz
- 🌐 [www.theroofingstore.co.nz](http://www.theroofingstore.co.nz)

### USEFUL INFORMATION

For design, installation, maintenance and warranty information for the Standing Seam system, and for supply and manufacturing information, and the statement made about s26 of the Building Act 2004, refer to [www.theroofingstore.co.nz](http://www.theroofingstore.co.nz)

### OTHER CERTIFICATIONS AND APPROVALS

KiwiColour as manufacturer of the coated steel product provide assurance that the steel:

- has been manufactured in accordance with AS 1397-2001.
- is coated in accordance with AS/NZS 2728.

Scope	Limitations
As an external wall cladding.	<ul style="list-style-type: none"> <li>➤ Must be installed over a drained and ventilated cavity.</li> <li>➤ Where installed horizontally, castellated cavity battens are required.</li> <li>➤ Flashings, flexible and rigid building underlays and fixings must be in accordance with E2/AS1 and/or the NZMRM Code of Practice (V3.0).</li> <li>➤ Contact with other materials must be in accordance with E2/AS1 and NZMRM Code of Practice (V3.0).</li> </ul>
As an internal wall lining.	<ul style="list-style-type: none"> <li>➤ Where material group 1 or greater is required.</li> </ul>

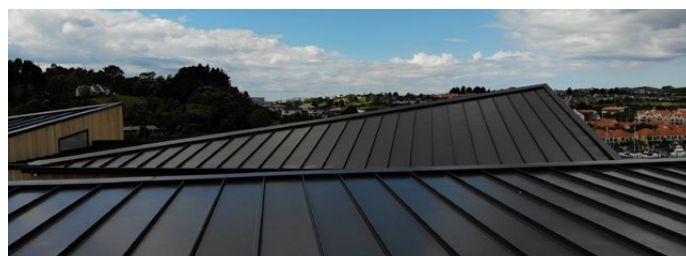
## PERFORMANCE CLAIMS

If designed, installed and maintained in accordance with all The Roofing Store requirements, the Standing Seam system will comply with or contribute to compliance with the following performance claims:

NZ Building Code clauses	Compliance statement	BASIS OF COMPLIANCE Demonstrated by
<b>B1 Structure</b> B1.3.1, B1.3.2, B1.3.3 (a, b, c, d, g, i) B1.3.4 (a, b, c, d, e)	ACCEPTABLE SOLUTION B1/AS1	<ul style="list-style-type: none"> <li>➤ AS 1397:2001.</li> <li>➤ AS/NZS 1170:2002 (for span tables).</li> </ul>
B2 Durability B2.3.1 (b) B2.3.2 (b)	VERIFICATION METHOD B2/VM1	<ul style="list-style-type: none"> <li>➤ Coated in accordance with AS/NZS 2728:2013 (cited in E2/AS1) which provides for profiled metal roofing and cladding solutions including the durability attributes of the building elements.</li> </ul>
<b>C3 Fire Affecting Areas Beyond the Fire Source</b> C3.4 (a) C3.7 (a)	ACCEPTABLE SOLUTION C/AS2 1 <sup>st</sup> Edition, June 2019 VERIFICATION METHOD C/VM2	<ul style="list-style-type: none"> <li>➤ Steel, aluminium, stainless steel and cooper are non-combustible.</li> <li>➤ Material Group 1S, Table A1, C/VM2.</li> </ul>
<b>E2 External Moisture</b> E2.3.1, E2.3.2, E2.3.5, E2.3.7 (a, b, c)	ALTERNATIVE SOLUTION	<ul style="list-style-type: none"> <li>➤ Generally in accordance with NZMRM Code of Practice (v3.0) &amp; E2/AS1.</li> <li>➤ E2 Evaluation of wall cladding system demonstrates compliance with Clause E2 (TBB, 10/2022).</li> <li>➤ E2 Evaluation of roof cladding system demonstrates compliance with Clause E2 (TBB, 10/2022).</li> </ul>
<b>E3 Internal Moisture</b> E3.3.4, E3.3.5, E3.3.6	ALTERNATIVE SOLUTION	<ul style="list-style-type: none"> <li>➤ Metal is impervious.</li> <li>➤ Where E3 applies, the profile is to be installed in accordance with E3/AS1.</li> </ul>
<b>F2 Hazardous Building Materials</b> F2.3.1	ALTERNATIVE SOLUTION	<ul style="list-style-type: none"> <li>➤ Use in accordance with supplier's safety information.</li> <li>➤ Coating system is inert once dry.</li> </ul>

## SOURCES OF INFORMATION

- BRANZ [n.d.] *Fire Testing & Assessment*. Retrieved from [https://www.branz.co.nz/cms\\_display.php?sn=338&st=1&pg=18353](https://www.branz.co.nz/cms_display.php?sn=338&st=1&pg=18353) (16/12/2019).
  - TBB. [10/2022]. *E2 Evaluation of TRS Standing Seam™, TRS Super Seam™ and TRS Interlocking Wall Cladding for use as wall cladding*.
  - TBB. [10/2022]. *E2 Evaluation of TRS Standing Seam™ and TRS Super Seam™ roof cladding*.
1. Where a standard is referenced it is to be read as amended by the acceptable solution or verification method as applicable.
  2. Sources of information also include the Building Act 2004 and its regulations, including the Building Code (Schedule 1 of the Building Regulations 1992), Acceptable Solutions and Verification Methods, and relevant cited standards.
  3. The quality and assurance that the supplied products meet the performance claims stated in this pass™ are the responsibility of the company that is the holder of this pass™.
  4. The availability of the information about the supplied products required to be disclosed under s14G(3) is the responsibility of the company that is the holder of this pass™.



Scan or click this QR code for a full download of Compliance Documentation for this pass™.  
[www.theroofingstore.co.nz](http://www.theroofingstore.co.nz)



The Roofing Store Ltd confirms that if TRS Standing Seam™ is used in accordance with the requirements of this pass™ the product will comply with the NZ Building Code and other performance claims set out in this pass™ and the company has met all of its obligations under s14G(2) of the Building Act.

**Date of first issue:** 19/06/2020

**Date of current issue:** 28/06/2023

**NZBN:** 9429030587328

*Kevin Brunton*

Kevin Brunton, Technical Director, TBB confirms that the process used to prepare this pass™ on behalf of The Roofing Store Ltd has been undertaken in accordance with MBIE PTS guidelines and in accordance with the TBB pass™ process which is within the scope of TBB's ISO 9001 certification.

9606D66ADE51EA6CCC25850D00239F99